



Image Studio™ 4.x.x Installation Instructions for the Odyssey® CLx Imaging System



LI-COR®

Image Studio 4.x.x Installation Instructions

Mac® OS X® 10.8 (Mountain Lion) or 10.9 (Mavericks):

Installing via CD:

- 1) Place installation CD into drive.
- 2) If installation does not start immediately, browse to the CD and double-click on MaImageStudioCLx_4.x.x.dmg.
- 3) Click **Agree** to accept the license agreement.
- 4) To install, drag the Image Studio icon into the Applications folder (right).
- 5) If you have purchased additional application keys, you will need to import those keys again to utilize their functionality.



Installing via download:

- 1) Go to your Mac System Preferences and click **Security & Privacy** to open the Security & Privacy window.
- 2) Click the lock in the bottom left corner of the window to allow editing, if necessary.
- 3) Under the **General** Tab, click **Mac App Store and identified developers** under the **Allow applications downloaded from** option.
- 4) Download, and double-click on the MaImageStudioCLx_4.x.x.dmg file on your computer.
 - a. Click **Agree** to accept the license agreement.
 - b. To install, drag the Image Studio icon into the Applications folder.
 - c. Open the Image Studio Application by double-clicking on the Image Studio icon.
 - d. If a window appears that says "ImageStudio.app is an application downloaded from the internet. Are you sure you want to open it?" click **Open**.
- 5) If you have purchased additional application keys, you will need to import those keys again to utilize their functionality.

Windows 7, 8, or 8.1 Operating Systems:

IMPORTANT: The installer must have administrator privileges on the computer to install Image Studio 4.x.x. Log on to the computer as Administrator, or log on as a user who has administrative permissions. Computer requirements: Minimum 4 GB of RAM, Win 7, 8, or 8.1 Operating System.

Installing via CD:

- 1) Place installation CD into drive.
- 2) If installation does not start immediately, browse to the CD and double-click on Win_Image StudioCLx_4.x.x.exe.
- 3) Click **Next** and follow instructions in the Setup Wizard.

Installing via download:

- 1) Download and double-click on the Win_Image StudioCLx_4.x.x.exe file on your computer.
- 2) Click **Next** and follow the instructions in the Setup Wizard.

Image Studio Setup Wizard

- 1) Open Win Image Studio Installer 4.x.x on your computer.

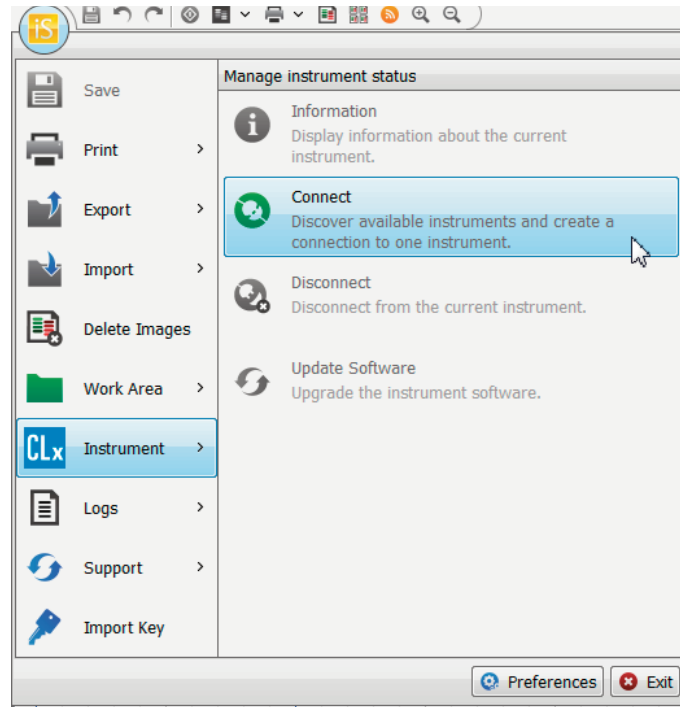


- 2) Follow instructions in the Setup Wizard.

NOTE: After the Image Studio installation process is completed, installation of the communication program (mDNSResponder) will begin automatically. If upgrading from a previous version of Image Studio, this installation may not be needed.

- 3) Please refer to instructions included with your additional application keys, if applicable, for new installations.
- 4) If you are upgrading from a previous version of Image Studio software on a Mac, you will need to reinstall additional application keys.

Instrument Connection



The first time you connect, power the Odyssey CLx Imager on and wait several minutes to allow the instrument to establish a network address.

- 1) Click the Image Studio icon in the upper left-hand corner of the Image Studio window.
- 2) Hover over 'Instrument' and click **Connect**.

The software automatically searches for and discovers the Odyssey CLx Imager.

NOTE: If you experience connection problems, a connection diagnostic will launch to help you diagnose the problem.

LI-COR is an ISO 9001 registered company. ©2014 LI-COR, Inc. LI-COR, Odyssey, and Image Studio are trademarks or registered trademarks of LI-COR, Inc. in the United States and other countries. All other trademarks belong to their respective owners. For patent information, visit www.licor.com/patents.



4647 Superior Street • P.O. Box 4000 • Lincoln, Nebraska 68504 USA
Phone: 402-467-0700 • Toll free: 800-645-4267 • Fax: 402-467-0819 • www.licor.com/bio

LI-COR GmbH Germany, Serving Europe, Middle East, and Africa: +49 (0) 6172 17 17 771

LI-COR UK Ltd. UK, Serving UK, Ireland, and Scandinavia: +44 (0) 1223 422104

All other countries, contact LI-COR Biosciences or a local LI-COR distributor:

<http://www.licor.com/distributors>