

Specifications (926-42214)

- Size: 100 µL
- Storage: -20 °C
- Species Cross-Reactivity: human, rabbit, monkey, zebrafish, bovine, pig
Warning: *Not suitable for detection of COX IV derived from mouse.*
- Target Molecular Weight: 17 kDa
- Specificity/Sensitivity: This antibody detects endogenous levels of total COX IV protein.
- Immunogen: Animals are immunized with a synthetic peptide that corresponds to residues surrounding Lys29 of human COX IV.
- Storage Buffer: 10 mM HEPES (pH 7.5), 150 mM NaCl, 100 µg/mL BSA, 50% glycerol, and less than 0.02% sodium azide.

Do not aliquot the antibody.

Warning: *Sodium azide is a poisonous and hazardous substance. Handle with care and dispose of properly.*

Recommended Dilution

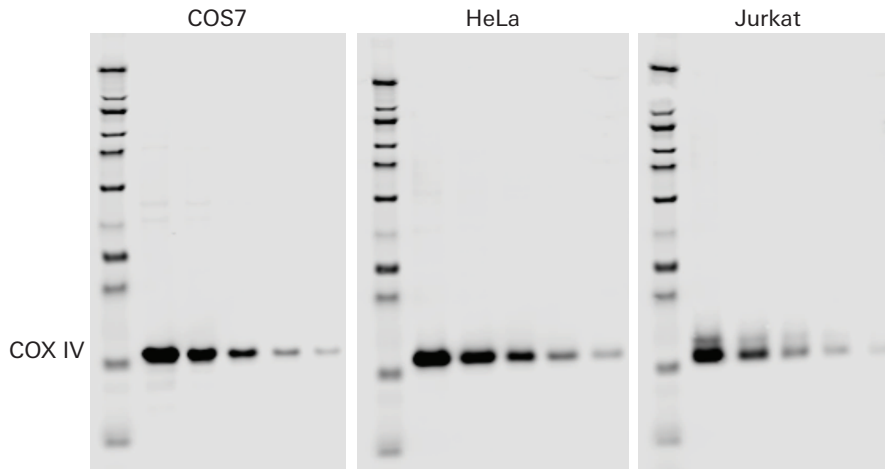
Western Blotting: 1:1000

Applications

Cytochrome c oxidase is localized to the inner mitochondrial membrane. The COX IV antibody can be used as a mitochondrial loading control and a loading control for normalizing low expressing target proteins. This COX IV primary antibody can be used for detection of COX IV by Western blot, or as a normalization antibody when performing two-color detection. Detection of this primary antibody can be achieved with IRDye® Goat Anti-Rabbit or IRDye Donkey Anti- Rabbit secondary antibodies.

See (licor.com/support) for detailed protocols.

Example Data



COX IV was detected in and COS-7, HeLa, and Jurkat cell lines. Dilutions of each cell lysate are: 2.5, 1.25, 0.625, 0.313, and 0.156 $\mu\text{g}/\text{well}$. Typical results are shown using Odyssey[®] Nitrocellulose Membranes (P/N: 926-31092) and Intercept[®] Blocking Buffer (P/N: 927-70000). The COX IV antibody was used at a 1:1000 dilution and the IRDye 680RD Goat anti-Rabbit (P/N: 925-68071) was used at a 1:15,000 dilution (optimal range is 1:5000 – 1:25000). The Chameleon[®] Duo Pre-stained Protein Ladder (P/N: 928-60000) was used. The Western blot was imaged using the AutoScan function on an Odyssey Infrared Imaging System.

Limitation of Liability and Limited Use Label License

For Research Use Only. Not intended for human therapeutic or diagnostic use.

By using this product, you agree to the Limitation of Liability and the Limited Use Label License available online at licor.com/packinserts under the **Pack Inserts** heading (the "License"). The License is incorporated herein by this reference, and the License may be updated from time to time.



© 2020 LI-COR, Inc. LI-COR, In-Cell Western, Chameleon, Intercept, IRDye, and Odyssey are trademarks or registered trademarks of LI-COR, Inc. in the United States and other countries. All other trademarks belong to their respective owners.

LI-COR Biosciences

4647 Superior Street
Lincoln, NE 68504
Phone: +1-402-467-0700
Toll free: 800-645-4267
biosales@licor.com
licor.com/bio

Regional Offices

LI-COR Biosciences GmbH
Siemensstraße 25A
61352 Bad Homburg
Germany
Phone: +49 (0) 6172 17 17 771
bio-eu@licor.com

LI-COR Biosciences UK Ltd.
St. John's Innovation Centre
Cowley Road • Cambridge
CB4 0WS • United Kingdom
Phone: +44 (0) 1223 422104
bio-eu@licor.com