

1 Unpack C-DiGit® Blot Scanner



* Used for alternative connection methods, described in detail in the C-DiGit Blot Scanner User Guide on the Resource CD.

2 Place C-DiGit Blot Scanner in Lab

Place the C-DiGit Blot Scanner away from heat sources (furnaces, windows, etc.) and out of direct sunlight.

3 Install Image Studio Software

Windows® 7, 8, or 8.1 (32- and 64-bit versions, 4 GB RAM minimum):
Important: You must be logged in to Windows® using an Administrator account. If necessary, log out and back in using an Administrator account.
1. Place installation CD into drive.
2. If installation does not start immediately, browse to the CD and open Win_Image Studio Digits_4.x.exe.
3. Click **Next** and follow the instructions in the Setup Wizard.

Mac OS X® 10.8 or 10.9 (Mountain Lion or Mavericks, 4 GB RAM minimum):

1. Place installation CD into drive.
2. If installation does not start immediately, browse the desktop and double-click on MacImageStudioDigits_4.x.dmg.
3. Click **Agree** to accept the license agreement.
4. To install, drag the Image Studio icon onto the Applications icon (right).



Mobile Acquisition Software for C-DiGit Blot Scanner:
To run the C-DiGit Blot Scanner using your Apple® iOS® mobile device, visit:

<http://www.licor.com/ismobile>

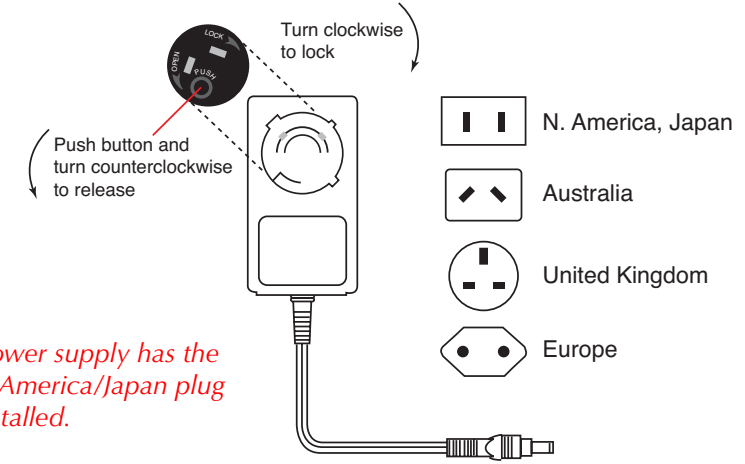
4 Remove Warning Label

Remove the yellow warning label on the C-DiGit Blot Scanner back panel.



5 Install Power Supply Plug

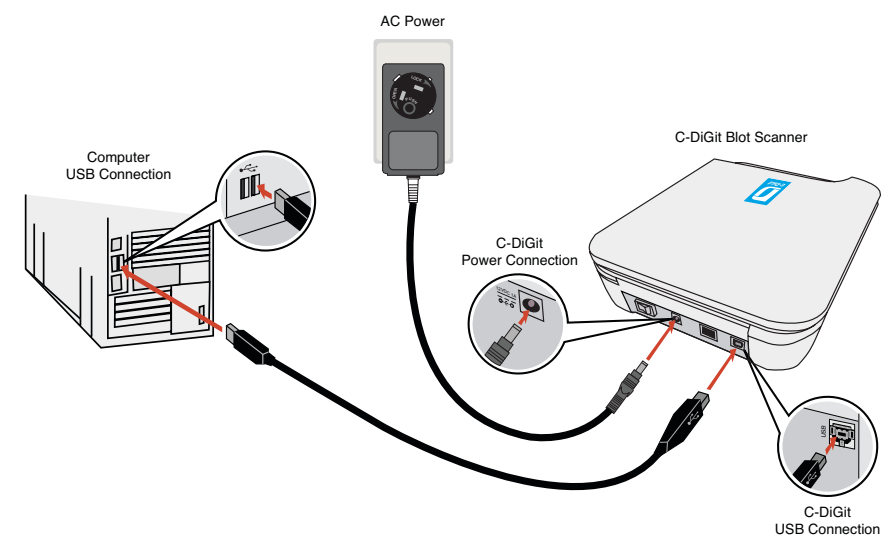
The power supply has interchangeable AC plugs for use in North America and Japan, Australia, Europe, and the United Kingdom. Install the appropriate plug on the power supply as shown below.



The power supply has the North America/Japan plug pre-installed.

6 Connect USB Cable and Power

Connect the larger of the two connectors on the USB cable to your computer, and the smaller end to the C-DiGit Blot Scanner back panel at the connector labeled 'USB'. Connect the power supply plug to the jack on the rear panel labeled '12VDC 1A'.



7 Turn on C-DiGit Blot Scanner

Power C-DiGit Blot Scanner on with the power switch on the back panel. The blue power light on the instrument front panel (below) illuminates when the instrument is powered on.



8 Wait While USB Drivers Install

When C-DiGit is powered on and connected to the computer for the first time, drivers are automatically installed on the computer. **Allow up to 5 minutes for the drivers to install before starting the Image Studio software in Step 9 below.** NOTE: You may have to dismiss any 'Found New Hardware' messages.



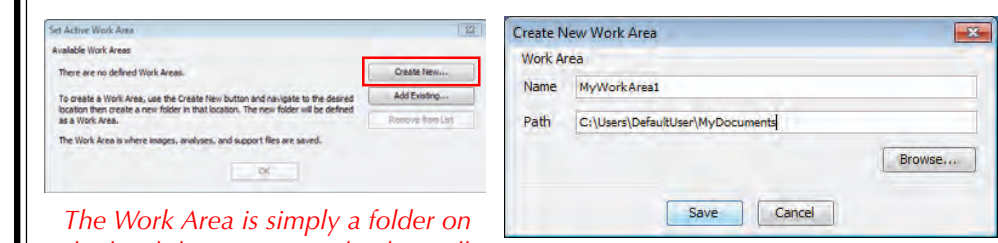
9 Start Image Studio

Double-click the Image Studio icon on the desktop to start Image Studio.



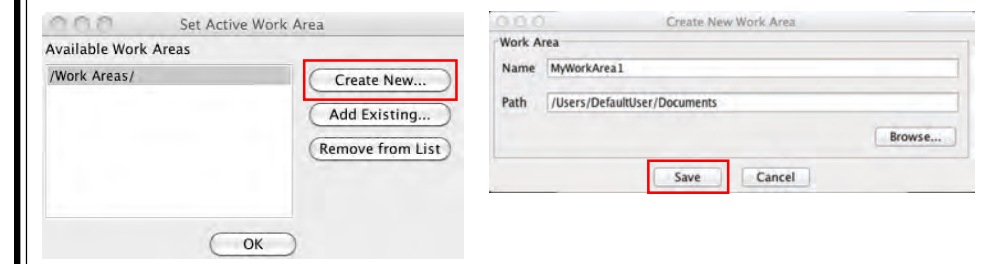
10 Create New Work Area Folder

PC: Click **Create New**. Navigate to where the folder will reside and name the folder. Click **Save**.



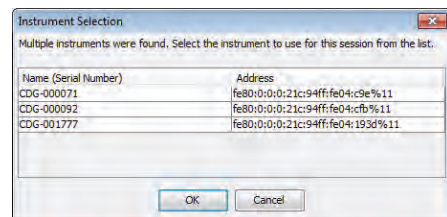
The Work Area is simply a folder on the hard drive or network where all of the images, analyses and settings are stored.

Mac: Click **OK** to use the default work area, or click **Create New**. Name the folder and navigate to where the folder will reside. Click **Save**.



11 Connect to C-DiGit Blot Scanner

If there is only one C-DiGit detected by the computer, it will connect automatically; if there are multiple C-DiGits detected, you will have to choose the desired C-DiGit Blot Scanner from a list of available instruments (below, listed by serial number).



You can find the serial number on a label on the underside of the instrument.

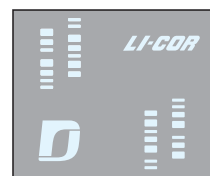
When a connection is established, the green indicator light will illuminate on the instrument front panel, and the Status panel in the Image Studio window will display 'Ready'.



NOTE: C-DiGit Blot Scanner uses IPv6 and IPv4 Link-Local Addressing to automatically create an IP network without any user configuration or additional servers. If you experience connection problems, be sure that IPv6 is enabled on the computer.

12 Expose C-DiGit Blot Scanner Target

Open the Target envelope and expose the side of the Target with the gray background to room light for 30 seconds. Place the Target face down (gray background) on the C-DiGit Blot Scanner scanning surface.



Expose this side

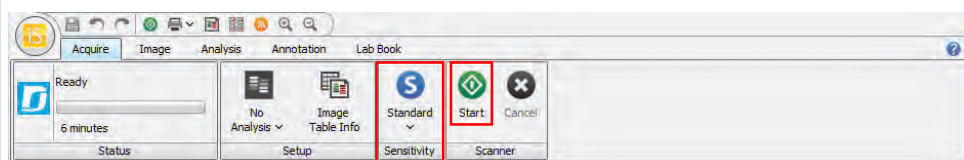
1. Expose to room light for 30 seconds
2. Place exposed side down

13 Acquire Target Image

Make sure that the Sensitivity is set to **Standard** (S). If the Sensitivity is not set to Standard, click on the Sensitivity button and choose Standard from the pull-down menu. Image acquisition using Standard sensitivity takes approximately 6 minutes to complete.

Click the **Start** button (Start icon) on the Acquire tab ribbon.

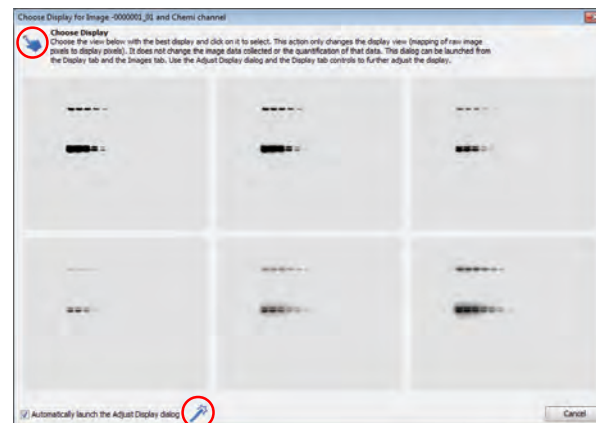
The image acquisition will start, and the target image will be displayed as a series of six images of various brightness/contrasts (Step 14).



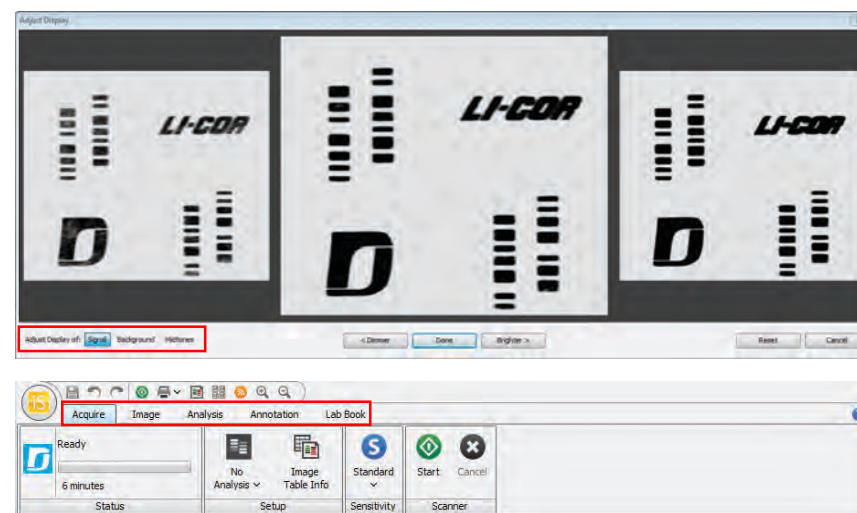
14 Adjust Target Image

Verify that your target image is similar to that shown below. If it matches, your C-DiGit is functioning correctly.

The highlighted icons at right can also be found in the rightmost pane of the main Image Studio window, and will open the Chooser (right) and Adjust Display (below) dialogs.



Click on the best image; that image will open in a new window (below), allowing for further adjustment, if desired. Click on **Signal**, **Background**, or **Midtones** to adjust the brightness for these channels. Click **Done**.



Click the other ribbon tabs (above) for additional features, including:

- Image** - Adjust the image appearance, crop, rotate, view image array.
- Analysis** - Draw shapes to quantify data.
- Annotation** - Add text annotations to image.
- Lab Book** - Create a .pdf file containing images, data tables, and charts.

Click on the **Shapes** and/or **Images** tabs at the bottom of the window to view:

- Shapes** - Table of quantification data for selected image.
- Images** - Table of acquired images, settings, and comments.

Congratulations!

You are now ready to image your own sample. Additional resources can be found in the C-DiGit Blot Scanner User Guide, on the Resource CD.