

Components

P/N	Description
928-50000	Chameleon Vue Pre-stained Protein Ladder, 250 µL
928-50001	Chameleon Vue Pre-stained Protein Ladder, Sample Pack, 25 µL

Specifications

- Shelf Life: 6 months from date of receipt
- Storage: Store in small aliquots at -15 to -25 °C and always protect from light. Do not subject the ladder to more than 25 cycles of freezing and thawing.

Loading Volumes

Application	Recommended Loading Volume
Protein Gel	10 µL
Western Blot	1 - 5 µL*

*Ladder volume may require optimization to obtain uniform signal compared to your sample.

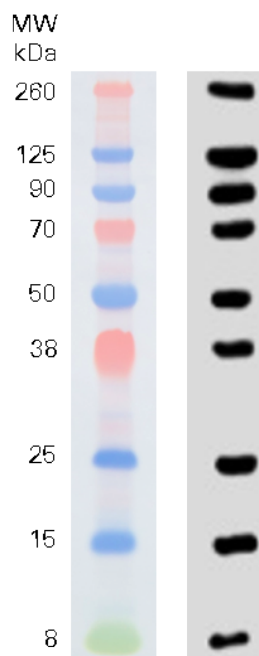
Product Description

The Chameleon Vue Pre-stained Protein Ladder provides multicolored, pre-stained, and visible bands of convenient and consistent protein sizes.

In gels, the ladder can be used to visualize progress of the protein separation during electrophoresis and to estimate the molecular weight of unknown proteins based on their relative mobility. In blotting applications, the ladder can be used to monitor protein transfer and as a reference to estimate the molecular weight of proteins of interest. For chemiluminescent detection, annotate the pre-stained bands using the WesternSure® Pen (P/N 926-91000) prior to the addition of substrate.

The example shows a visible image (left) and a chemiluminescent image (right) resolved on a 4 - 12% Bis-Tris Gel and transferred to nitrocellulose via wet tank transfer. The blot was scanned on a C-DiGit® Blot Scanner for 6 minutes.

The ladder is optimized for use with Bis-Tris and Tris-Glycine systems. To see a complete portfolio of LI-COR molecular weight markers, visit licor.com/proteinmarkers.



Protocol

Chameleon Pre-stained Protein Ladders are provided ready to use in loading buffer. Bring the product to room temperature while protecting from light. Mix the product thoroughly before use to dissolve any solids that may have precipitated during storage. **Do not heat above room temperature.**

After electrophoresis, the ladder will separate into 9 visible bands in the 8 - 260 kDa range. For individual molecular weights, please refer to the image above. For chemiluminescent detection, you may trace the pre-stained bands using a WesternSure Pen prior to the addition of the chemiluminescent substrate. The marked bands will chemiluminesce during imaging.

Note: *The Chameleon Pre-stained Protein Ladders are not standards, and protein band migration may appear different depending on the gel type used.*

For instructions on sizing bands in Image Studio™ Software, visit licor.com/chameleon-sizing.

Limitation of Liability and Limited Use Label License

For Research Use Only. Not intended for human therapeutic or diagnostic use.

By using this product, you agree to the Limitation of Liability and the Limited Use Label License available online at licor.com/packinserts under the **Pack Inserts** heading (the "License"). The License is incorporated herein by this reference, and the License may be updated from time to time.



© 2020 LI-COR, Inc. LI-COR, C-DiGit, Chameleon, WesternSure, and Image Studio are trademarks or registered trademarks of LI-COR, Inc. in the United States and other countries. All other trademarks belong to their respective owners.

LI-COR Biosciences

4647 Superior Street
Lincoln, NE 68504
Phone: +1-402-467-0700
Toll free: 800-645-4267
biosales@licor.com
licor.com/bio

Regional Offices

LI-COR Biosciences GmbH
Siemensstraße 25A
61352 Bad Homburg
Germany
Phone: +49 (0) 6172 17 17 771
bio-eu@licor.com

LI-COR Biosciences UK Ltd.
St. John's Innovation Centre
Cowley Road • Cambridge
CB4 0WS • United Kingdom
Phone: +44 (0) 1223 422104
bio-eu@licor.com