

## Components

- 928-60000** Chameleon Duo Pre-stained Protein Ladder, 500 µL
- 928-60001** Chameleon Duo Pre-stained Protein Ladder, Sample Pack, 25 µL

## Specifications

- Channel: 700 and 800 nm
- Storage: Store in small aliquots at -15 to -25 °C and always protect from light. Do not subject the ladder to more than 25 cycles of freezing and thawing.
- Shelf Life: 6 months from date of receipt
- Compatible Imagers Include: Odyssey® M Imager, Odyssey DLx Imager, Odyssey CLx Imager, Odyssey XF Imager, Odyssey Fc Imager

## Loading Volumes

Application	Recommended Loading Volume
Protein Gel	10 µL
Western Blot	1 - 5 µL*

\*Ladder volume may require optimization to obtain uniform signal compared to your sample.

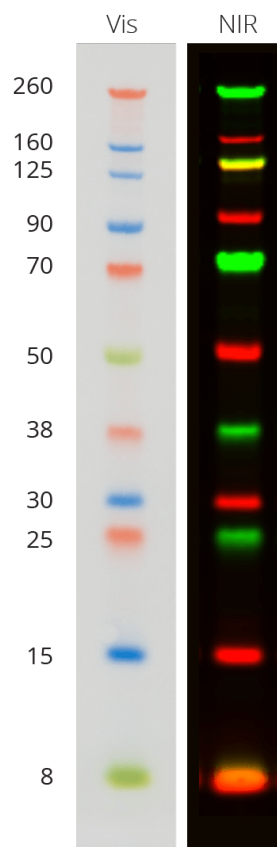
## Product Description

The Chameleon Duo Pre-stained Protein Ladder provides multicolored, pre-stained, and near-infrared fluorescent bands of convenient and consistent protein sizes.

In gels, the ladder can be used to visualize progress of the protein separation during electrophoresis and to estimate the molecular weight of unknown proteins based on their relative mobility. In blotting applications, the ladder can be used to monitor protein transfer and as a reference to estimate the molecular weight of proteins of interest.

The example shows a visible image (left) and a two-color, near-infrared image (right) resolved on a 4 - 12% Bis-Tris Gel and transferred to nitrocellulose via wet tank transfer. The blot was scanned on an Odyssey CLx Imager. Red and green represent the 700 and 800 nm channels, respectively.

The ladder is optimized for use with Bis-Tris and Tris-Glycine systems. To see a complete portfolio of LI-COR molecular weight markers, visit [licor.com/proteinmarkers](http://licor.com/proteinmarkers).



Chameleon Duo  
LI-COR P/N 928-60000

## Protocol

Chameleon Pre-stained Protein Ladders are provided ready to use in loading buffer. Bring the product to room temperature while protecting from light. Mix the product thoroughly before use to dissolve any solids that may have precipitated during storage. **Do not heat above room temperature.**

During electrophoresis, the ladder will separate into 11 visible and near-infrared bands in the 8 - 260 kDa range. The ladder can be used for easy visualization or two-color near-infrared detection. For individual molecular weights, please refer to the image above.

**Note:** *The Chameleon Pre-stained Protein Ladders are not standards, and protein band migration may appear different depending on the gel type used.*

## Analysis

### Empiria Studio® Software

Molecular weights for Chameleon Pre-Stained Protein ladders are preset in Empiria Studio Software, allowing you to estimate band size without entering the molecular weights. For more information, see the instructions for the Experiment workflow you are using at [licor.com/WesternWorkflowOverview](https://licor.com/WesternWorkflowOverview).

### Image Studio™ Software

For instructions on entering marker molecular weights and sizing bands in Image Studio Software, visit [licor.com/chameleon-sizing](https://licor.com/chameleon-sizing). Although Image Studio Software is no longer in development, we continue to sell and support it.

## Limitation of Liability and Limited Use Label License

For Research Use Only. Not intended for human therapeutic or diagnostic use.

By using this product, you agree to the Limitation of Liability and the Limited Use Label License available online at [licor.com/packinserts](https://licor.com/packinserts) under the **Pack Inserts** heading (the "License"). The License is incorporated herein by this reference, and the License may be updated from time to time.



© 2022 LI-COR, Inc. LI-COR, Odyssey, Chameleon, Empiria Studio, and Image Studio are trademarks or registered trademarks of LI-COR, Inc. in the United States and other countries. All other trademarks belong to their respective owners.

### LI-COR Biosciences

4647 Superior Street  
Lincoln, NE 68504  
Phone: +1-402-467-0700  
Toll free: 800-645-4267  
[biosales@licor.com](mailto:biosales@licor.com)  
[licor.com/bio](https://licor.com/bio)

### Regional Offices

LI-COR Biosciences GmbH  
Siemensstraße 25A  
61352 Bad Homburg  
Germany  
Phone: +49 (0) 6172 17 17 771  
[licor-eu@licor.com](mailto:licor-eu@licor.com)

LI-COR Biosciences UK Ltd.  
St. John's Innovation Centre  
Cowley Road • Cambridge  
CB4 0WS • United Kingdom  
Phone: +44 (0) 1223 422104  
[bio-eu@licor.com](mailto:bio-eu@licor.com)