

Moving Instructions for Odyssey® DLx and CLx Imagers

LI-COR



Do not follow these instructions unless you have been directed to by LI-COR support: [licor.com/biotechsupport](https://www.licor.com/biotechsupport).

These instructions are provided as a courtesy. LI-COR will not be held responsible for any damage incurred while moving, transporting, or shipping your imager, even if an existing warranty and/or service contract applies.

LI-COR offers a deinstallation service that verifies the instrument is at factory specs prior to being packed and shipped, and a reinstallation service to verify that, after the stress of a move, the imager is in good working order and can generate accurate data.

Challenges arise during long moves and shipping, such as rough terrain or turbulent air travel, and an imager may be damaged or broken. Therefore, support may recommend the deinstallation/reinstallation service and a professional mover for long moves. In addition, having a LI-COR service expert perform tests both before and after a move will help identify and address any damage sustained during transit.

Support may recommend that you follow the procedure below to move your imager in the lab.

Choose a Location

Your imager needs a location that is sturdy, adequately ventilated, and away from water or excessive heat. Ensure the new location meets **all** requirements specified under the "Placement in the Laboratory" section of your manual.

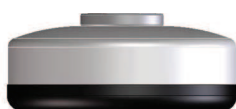
Prepare the Imager

Complete these steps before attempting to move your imager.

1. Exit LI-COR® Acquisition Software or Image Studio™ Software by closing the application.
2. Remove any items from the imaging area.
3. Turn off the imager by briefly pressing the **Power** button in the lower right-hand corner of the front panel.
4. On the back of the imager, disconnect the power cord from the power receptacle and the Ethernet cable from the Ethernet port.



5. Fully retract the four feet supporting the imager by turning them clockwise.



Imager Leveling Foot

Move the Imager

Your imager weighs about 33 kg (72 lbs). Be cautious and **lift the imager with two people**.

1. Lift the imager by placing your hands under the metal enclosure on each side. Keep the imager as level as possible and minimize vibration during the move.
2. Gently place the imager in its new location.

Reinstall the Imager

Once your imager has been moved to its new location, use the steps below to reinstall it.

1. Level the imager to prevent moist membranes from sliding on the scan surface and to keep the imager from tilting. The imager can be leveled by turning the four feet on the bottom of the imager to adjust the height of each corner.
2. On the back of the imager, reconnect the power cord to the power receptacle and the Ethernet cable to the Ethernet port.



© 2022 LI-COR, Inc. LI-COR, Odyssey, and Image Studio are trademarks or registered trademarks of LI-COR, Inc. in the United States and other countries. All other trademarks belong to their respective owners.

LI-COR Biosciences

4647 Superior Street
Lincoln, NE 68504
Phone: +1-402-467-0700
Toll free: 800-645-4267
biosales@licor.com
licor.com/bio

Regional Offices

LI-COR Biosciences GmbH
Siemensstraße 25A
61352 Bad Homburg
Germany
Phone: +49 (0) 6172 17 17 771
bio-eu@licor.com

LI-COR Biosciences UK Ltd.
St. John's Innovation Centre
Cowley Road • Cambridge
CB4 0WS • United Kingdom
Phone: +44 (0) 1223 422104
bio-eu@licor.com