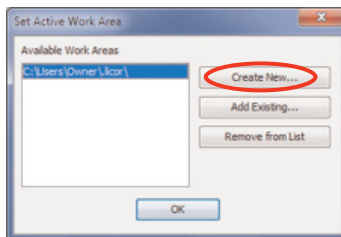


Start Image Studio™ Software

1. Double-click the Image Studio icon on the desktop to start Image Studio.
2. Select a Work Area and click OK, or create a new Work Area.
NOTE: A Work Area is a folder where the images, analyses, and settings are saved.

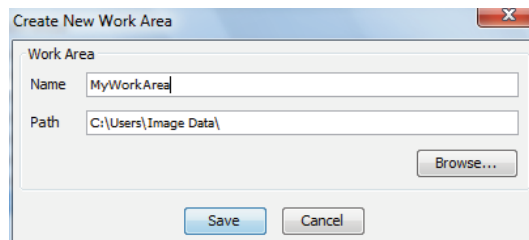
To create a new Work Area...

- 1) Click **Create New** in the Set Active Work Area dialog box.



- 2) In the Name Field, provide a name for your Work Area. Browse to the location where you want this folder to reside. Click **Save**.

NOTE: For the first Work Area, do not use the default path. Browse to a location such as My Documents or a folder on the desktop created specifically for Work Areas.



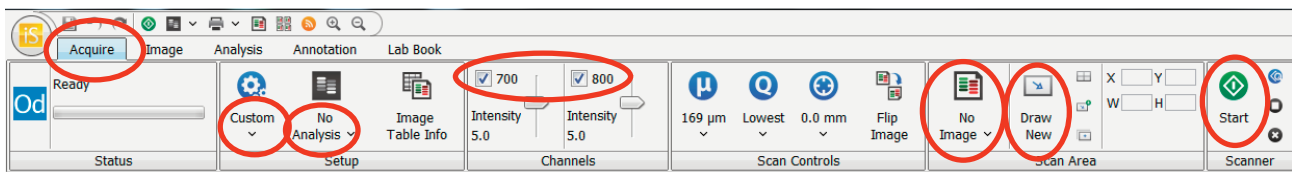
NOTE: Each user should create their own Work Area, as previous settings for instrument, analysis, image display, etc. from the last session will be applied to the next session in the same Work Area.

Place Blot on the Odyssey Classic Imager

1. Clean the Odyssey scan bed (lint-free tissues with either ultrapure water or methanol work best).
2. Place the blot protein-side down, with the wells toward the front, on the Odyssey scanning surface.
3. For best results: If wet, carefully place a silicone mat (LI-COR P/N 926-70001) over the membrane and use a 4" soft roller (LI-COR P/N 926-71000) to eliminate air bubbles.

Acquiring an Image

- 1) Click the **Acquire** tab.
- 2) In the Setup group, select the **Membrane** Scan Preset from the **Scan Preset** drop-down menu. Select **No Analysis**.
- 3) Enable the check boxes beside the desired channel(s) (700 and/or 800), indicating the channel(s) selected for image acquisition. Start with the Intensity settings at 5.
- 4) In the Scan Area group, select **No Image** from the drop-down menu of the first button. Select **Draw New**. Click the scan grid at the upper left point of the new rectangle and drag to the lower right.
- 5) Click **Start** to start the scan.

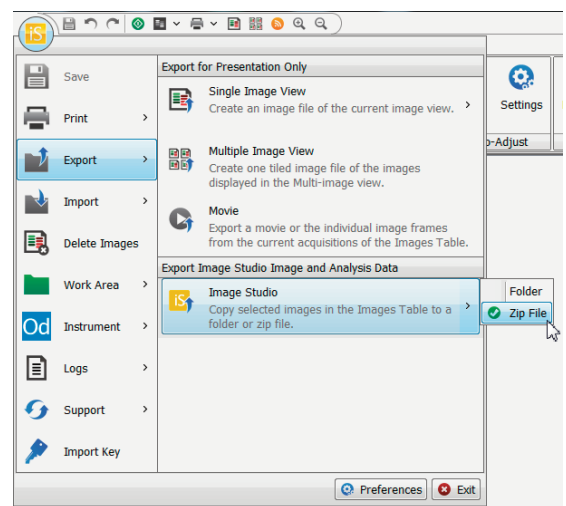


Export Image for Image Studio analysis on another computer

- 1) Click the Images tab above the table at the bottom of the window and select the image(s) to be exported.

Click the **Image Studio** icon and hover over **Export**. Click **Image Studio** and select **Zip File**.

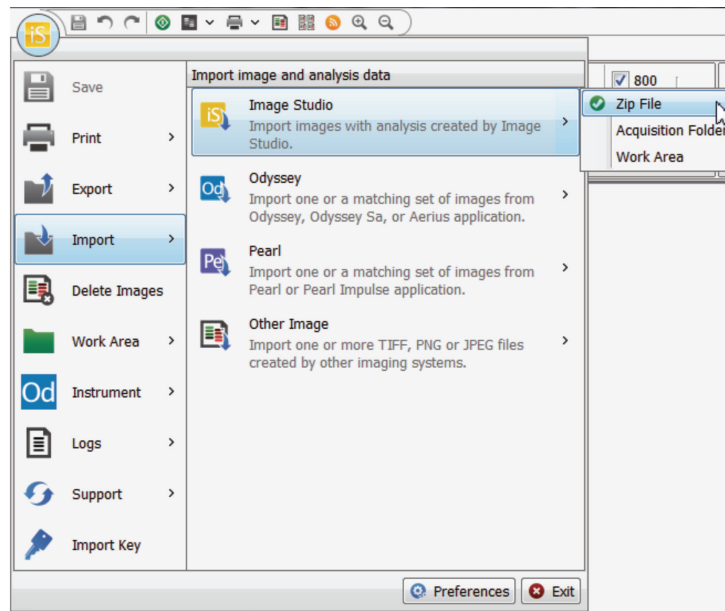
- 2) Specify where you want the image(s) to be exported and click **Save**.



Importing Image Acquisition Files

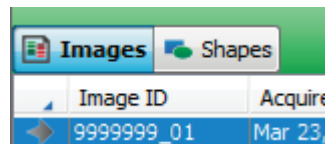
1. Image files can be imported from a zip file or another folder.
2. Click the Image Studio Application button. In the menu, click on **Import**, then click **Image Studio**.
3. Choose Zip File (recommended), Acquisition Folder, or Work Area.
4. A file selection window opens. Select the zip file, image folder(s), or Work Area to import and click **Open**.

NOTE: To import images from older Odyssey Application Software, click Import and then click Odyssey. Image files, Scan Folders, or Projects may be imported.

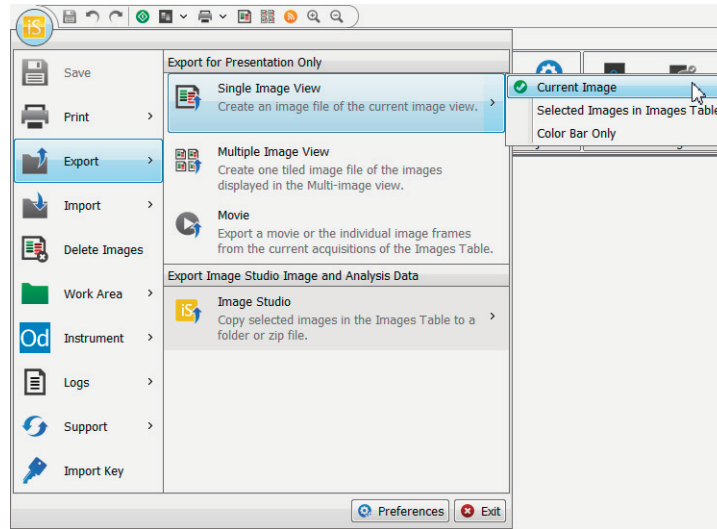


Export Image for Publication

- 1) Click the Images tab found above the table and then click on the image to be exported.



Click the **Image Studio** icon and hover over Export. Click **Single Image View** and select **Current Image**.



- 2) Make sure the size priority is set to Inches (or cm) and then click Reset Inches (or cm) to ensure the file is in its original size. If a larger image is required, adjust the output size accordingly.
- 3) Select 300 dpi (print) as the Publication Resolution and TIFF file as the Image Format.
- 4) Specify where you want the image to be exported and click **Save**.

NOTE: If you want the entire image to be exported and only a portion of the image is shown, Cancel out of the Export Current Image window, click on the Image ribbon, and deselect Apply in the Print/Export group.

©2014 LI-COR, Inc. LI-COR, Odyssey, and Image Studio are trademarks or registered trademarks of LI-COR, Inc. in the United States and other countries. All other trademarks belong to their respective owners. For patent information, visit www.licor.com/patents

LI-COR[®] 4647 Superior St. • P.O. Box 4000 • Lincoln, Nebraska 68504
LI-COR Biosciences North America: Sales Support: 888-645-2304
Order Support: 888-645-7242 • Technical Support: 800-645-4260
www.licor.com/bio

LI-COR GmbH, Germany, Serving Europe, Middle East and Africa: +49 (0) 6172 17 17 771
LI-COR Ltd, UK, Serving UK, Ireland and Scandinavia: +44 (0) 1223 422104
All other countries, contact LI-COR Biosciences or a local LI-COR distributor:
<http://www.licor.com/distributors>