

# Pack Odyssey® Fc Imager for Shipping

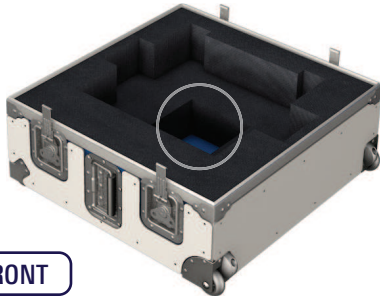
**LI-COR**

Follow these steps to pack the Odyssey Fc into its shipping case.

**Important:** Be careful and move the imager with two people! The imager weighs 60 lbs (27 kg).

- 1 Locate the front of base. Place cords and accessories (including Imaging Tray) into the indicated compartment.

When facing the front of the base, the wheels are located on the right.



FRONT

- 2 With two people, carefully place the imager with the front toward the front of the packing material.



FRONT

- 3 Place the top of box onto the base with the telescoping handle on the right.



FRONT

- 4 Securely fasten all four latches. Use the telescoping handle to move the case.



FRONT

There are two latches on the front and two on the back.



© 2021 LI-COR, Inc. LI-COR and Odyssey are trademarks or registered trademarks of LI-COR, Inc. in the United States and other countries. All other trademarks belong to their respective owners.

### LI-COR Biosciences

4647 Superior Street  
Lincoln, NE 68504  
Phone: +1-402-467-0700  
Toll free: 800-645-4267  
[biosales@licor.com](mailto:biosales@licor.com)  
[licor.com/bio](http://licor.com/bio)

### Regional Offices

LI-COR Biosciences GmbH  
Siemensstraße 25A  
61352 Bad Homburg  
Germany  
Phone: +49 (0) 6172 17 17 771  
[bio-eu@licor.com](mailto:bio-eu@licor.com)

LI-COR Biosciences UK Ltd.  
St. John's Innovation Centre  
Cowley Road • Cambridge  
CB4 0WS • United Kingdom  
Phone: +44 (0) 1223 422104  
[bio-eu@licor.com](mailto:bio-eu@licor.com)