

## Specifications (926-42210)

Quantity: 100 µL

Storage: -20 °C

## Recommended Dilution

**Western Blotting:** 1:1000

**In-Cell Western™ Assay:** 1:200

**Fixative:** Methanol

## Properties

**Species Cross-Reactivity:** human, mouse, rat, monkey

**Target Molecular Weight:** 45 kDa

**Isotype:** Rabbit IgG

**Specificity/Sensitivity:** This antibody may cross-react with γ-actin (cytoplasmic isoform), however there is no cross-reactivity with α-skeletal, α-cardiac, α-vascular smooth, or γ-enteric smooth muscle isoforms.

**Immunogen:** A synthetic peptide (KLH-coupled) that corresponds to the residues near the amino-terminus of human β-actin.

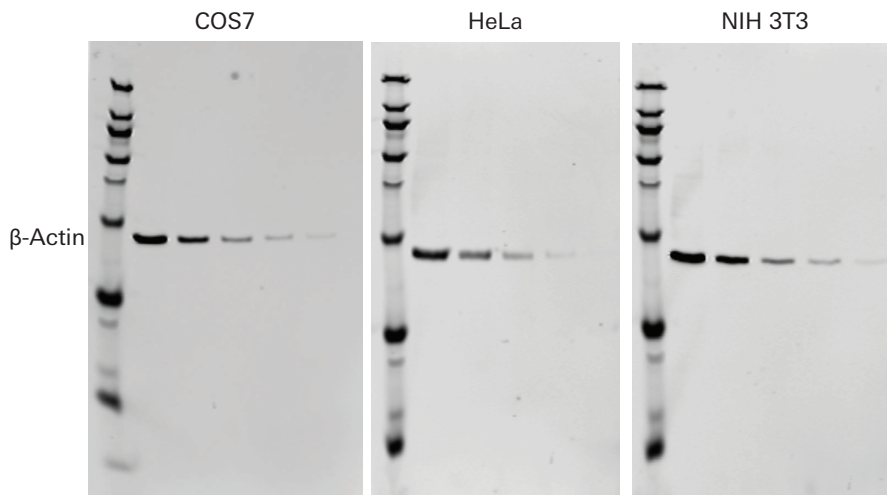
**Storage Buffer:** 10 mM HEPES (pH 7.5), 150 mM NaCl, 100 µg/mL BSA, 50% glycerol, and less than 0.02% sodium azide. *Do not aliquot the antibody.*

**Warning:** *Sodium azide is a poisonous and hazardous substance. Handle with care and dispose of properly.*

## Applications

This β-actin primary antibody can be used for detection of β-actin by Western blot. Detection of this primary antibody can be achieved with IRDye® Goat Anti-Rabbit or IRDye Donkey Anti-Rabbit secondary antibodies. This primary antibody can be used as a normalization antibody when performing two-color detection.

## Example Data



**β-Actin was detected in COS-7, HeLa, and NIH 3T3 cell lines.** Dilutions of each cell lysate are: 2.5, 1.25, 0.625, 0.313, and 0.156  $\mu\text{g}/\text{well}$ . Typical results are shown using Odyssey<sup>®</sup> Nitrocellulose Membranes (P/N: 926-31092) and Intercept<sup>®</sup> Blocking Buffer (P/N: 927-70000). The  $\beta$ -Actin antibody was used at a 1:1000 dilution and the IRDye 680RD Goat anti-Rabbit (P/N: 925-68071) was used at a 1:15,000 dilution (optimal range is 1:5000 – 1:25000). The Chameleon<sup>®</sup> Duo Pre-stained Protein Ladder (P/N: 928-60000) was used. The Western blot was imaged using the AutoScan function on an Odyssey Infrared Imaging System. A two-minute acquisition time is recommended to obtain an image on the Odyssey Fc Imaging System.

## Limitation of Liability and Limited Use Label License

For Research Use Only. Not intended for human therapeutic or diagnostic use.

By using this product, you agree to the Limitation of Liability and the Limited Use Label License available online at [licor.com/packinserts](http://licor.com/packinserts) under the **Pack Inserts** heading (the "License"). The License is incorporated herein by this reference, and the License may be updated from time to time.



© 2020 LI-COR, Inc. LI-COR, In-Cell Western, Chameleon, Intercept, IRDye, and Odyssey are trademarks or registered trademarks of LI-COR, Inc. in the United States and other countries. All other trademarks belong to their respective owners.

### LI-COR Biosciences

4647 Superior Street  
Lincoln, NE 68504  
Phone: +1-402-467-0700  
Toll free: 800-645-4267  
[biosales@licor.com](mailto:biosales@licor.com)  
[licor.com/bio](http://licor.com/bio)

### Regional Offices

LI-COR Biosciences GmbH  
Siemensstraße 25A  
61352 Bad Homburg  
Germany  
Phone: +49 (0) 6172 17 17 771  
[bio-eu@licor.com](mailto:bio-eu@licor.com)

LI-COR Biosciences UK Ltd.  
St. John's Innovation Centre  
Cowley Road • Cambridge  
CB4 0WS • United Kingdom  
Phone: +44 (0) 1223 422104  
[bio-eu@licor.com](mailto:bio-eu@licor.com)